

Hello!

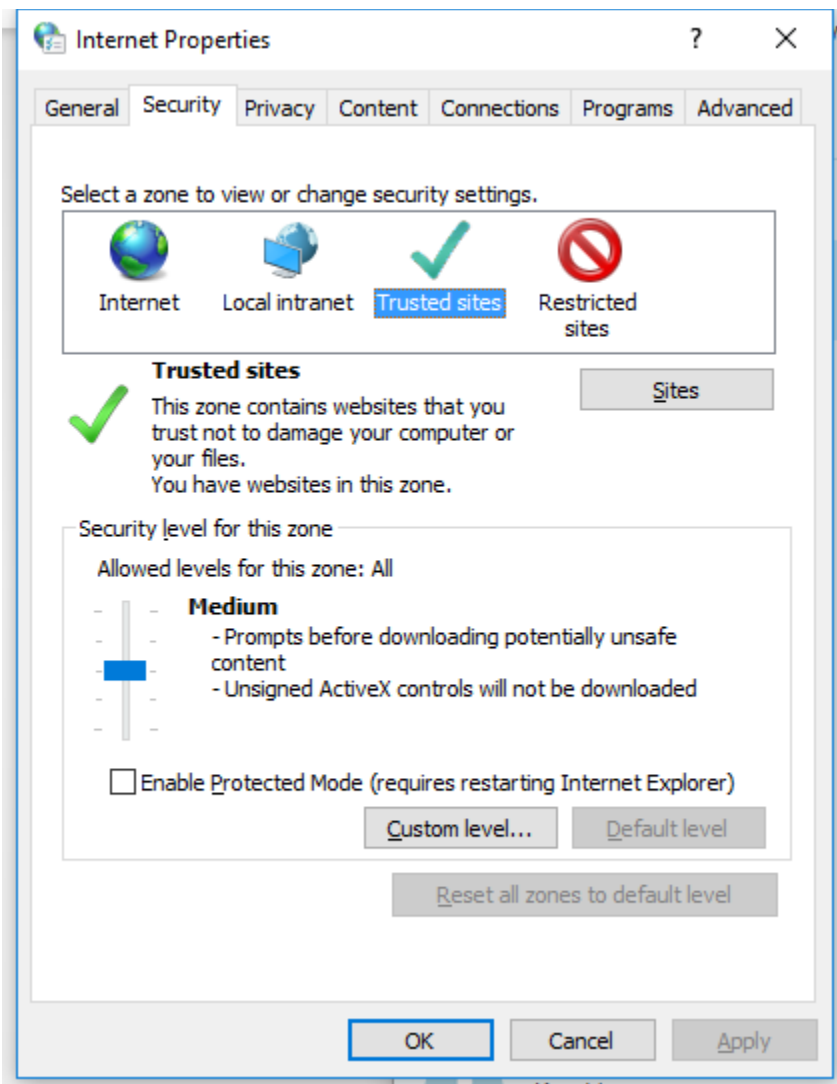
Thank you for the interest in NodeXL!

On some systems (often in large corporations or universities) access to websites needed by NodeXL are blocked. To resolve this issue, these web site addresses can be added to a list of trusted sites.

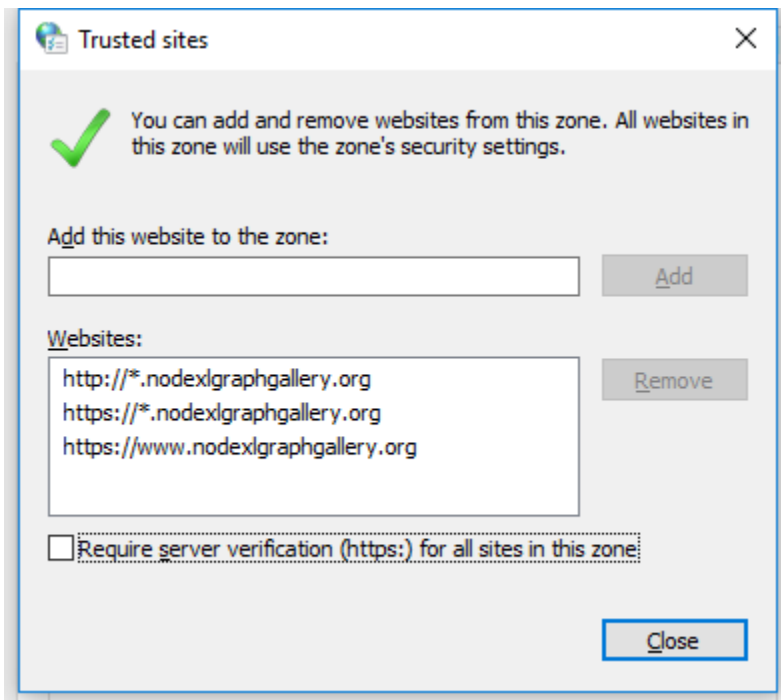
NodeXL needs access to the NodeXLGraphGallery.org web site.

To enable access to this web site, from the Windows Start menu, search for "Internet Options" and then select "Security" and "Trusted Sites".

There is a button below the Trusted Sites menu: "Sites" - select this to add the NodeXLGraphGallery.org web site to the exception list:



The Trusted Sites dialog will allow you to enter the following three web addresses:



NOTE: It is necessary to UNCHECK "Require server verification (https:) for all sites in this zone."

I would also be happy to hear about how you are using NodeXL in classes! We would be happy to add your syllabus to our list at:

<https://nodexl.codeplex.com/wikipage?title=NodeXL%20Teaching%20Resources>

We collect links to classes using NodeXL for our directory. Add a class:

https://docs.google.com/forms/d/1Wsiqw63DUbJ0oiydv6S8cTIEoU8klzpf_lsgmx8OPKI/viewform?c=0&w=1

If you need any additional assistance, please feel free to contact me (Skype: "Marc-A-Smith" or Phone: [+1-425-241-9105](tel:+14252419105)). I am in GMT -8 (California).

Regards,

-

Marc

marc@smrfoundation.org
http://twitter.com/marc_smith
<http://nodexl.codeplex.com>
<http://nodexlgraphgallery.org>
<http://www.smrfoundation.org/>