

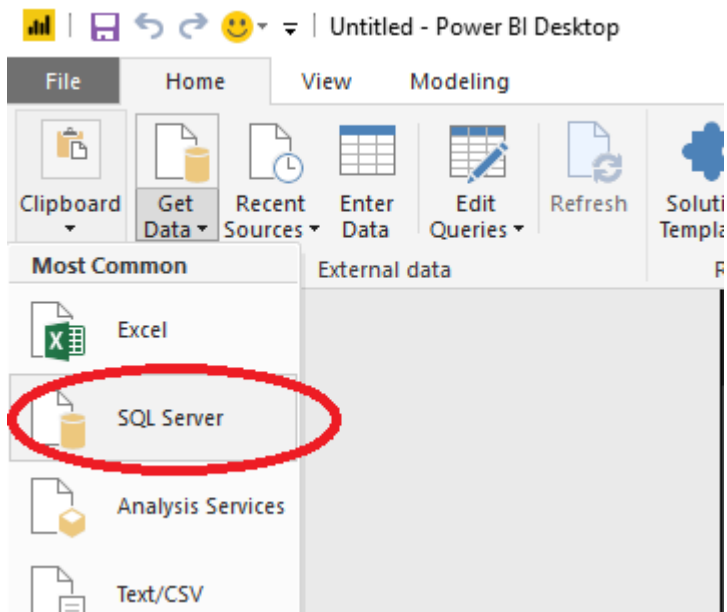
## Connecting to Data Sources with MS-Power BI

### Connecting to a remote data source (e.g., Data Warehouse)

Step 1 – Connect via AppStream using your RMU network login and password. For directions on using AppStream, click on the instruction link earlier in this course, or consult the RMU website.

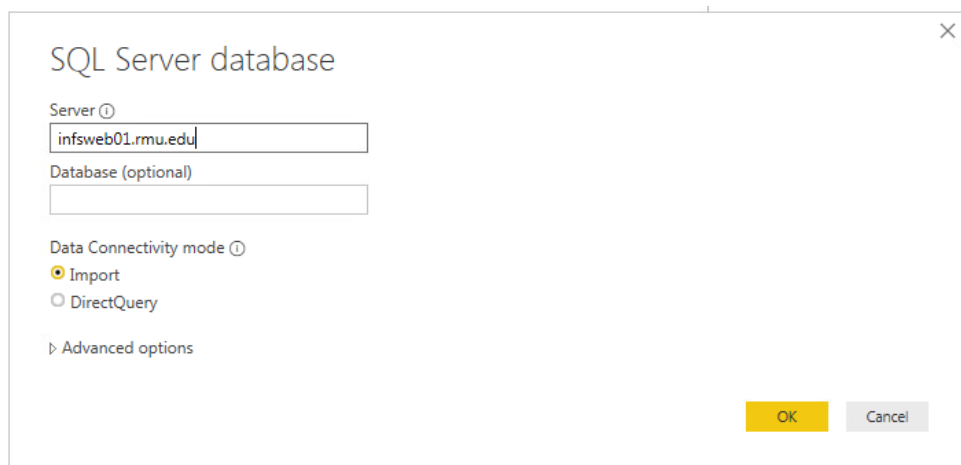
Step 2 – Once in the AppStream remote desktop, open MS-Power BI

Step 3 – Click on **Home tab / Get Data / SQL Server**



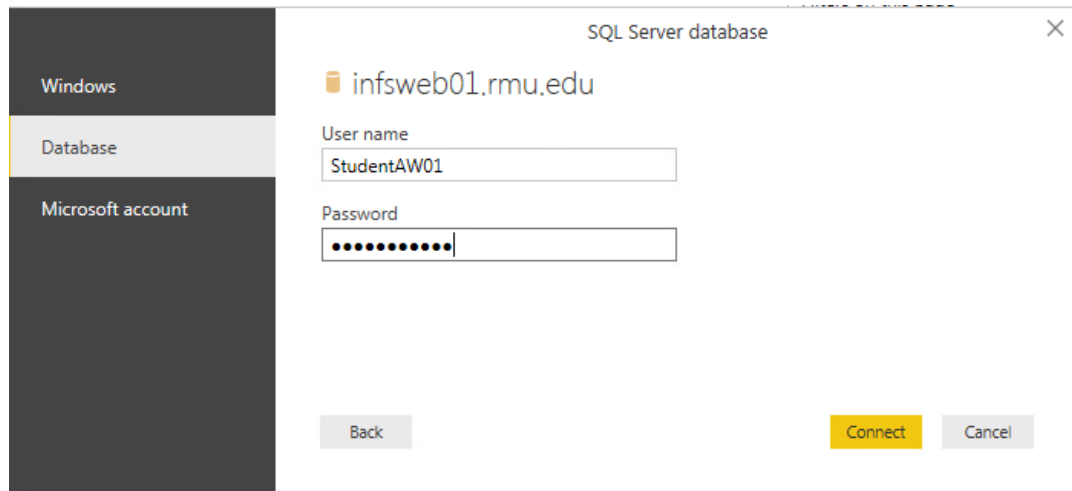
Step 4 – In the **Server** field, enter the following “infsweb01.rmu.edu”

Step 5 – For the **Data Connectivity Mode**, click the “Import” radio button and then click **OK**



Step 6 – On the left side, click on the Database option

Step 7 – In the **User name** field, enter your assigned user name (StudentAW01) and password (\$StudentAW01), then click **Connect**



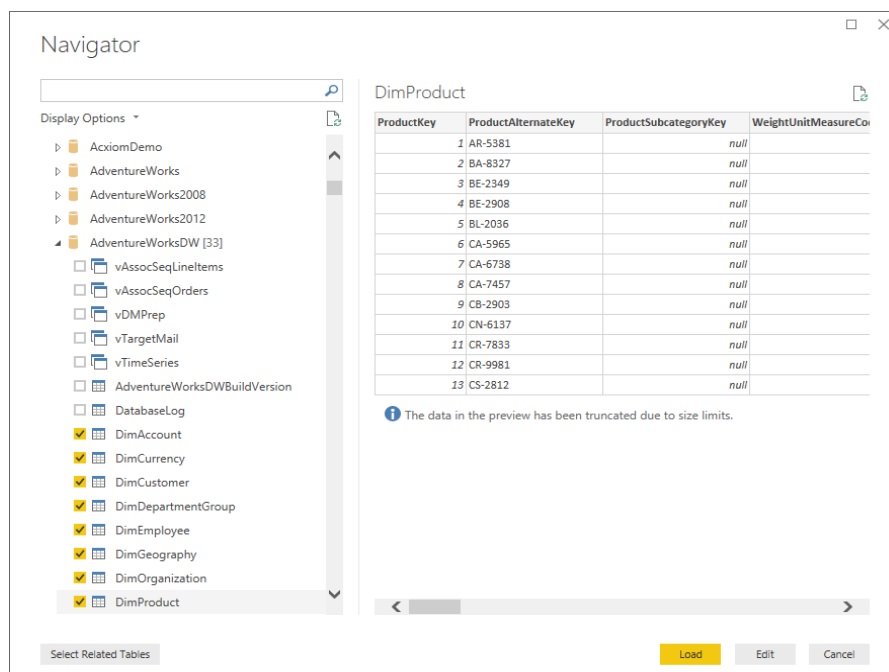
Note: If an “Encryption Support” warning appears, click **OK**

Step 8 – When the Navigator window appears, scroll down to find **AdventureWorksDW** (Hint: you can also use the *search* feature at the top of the list)

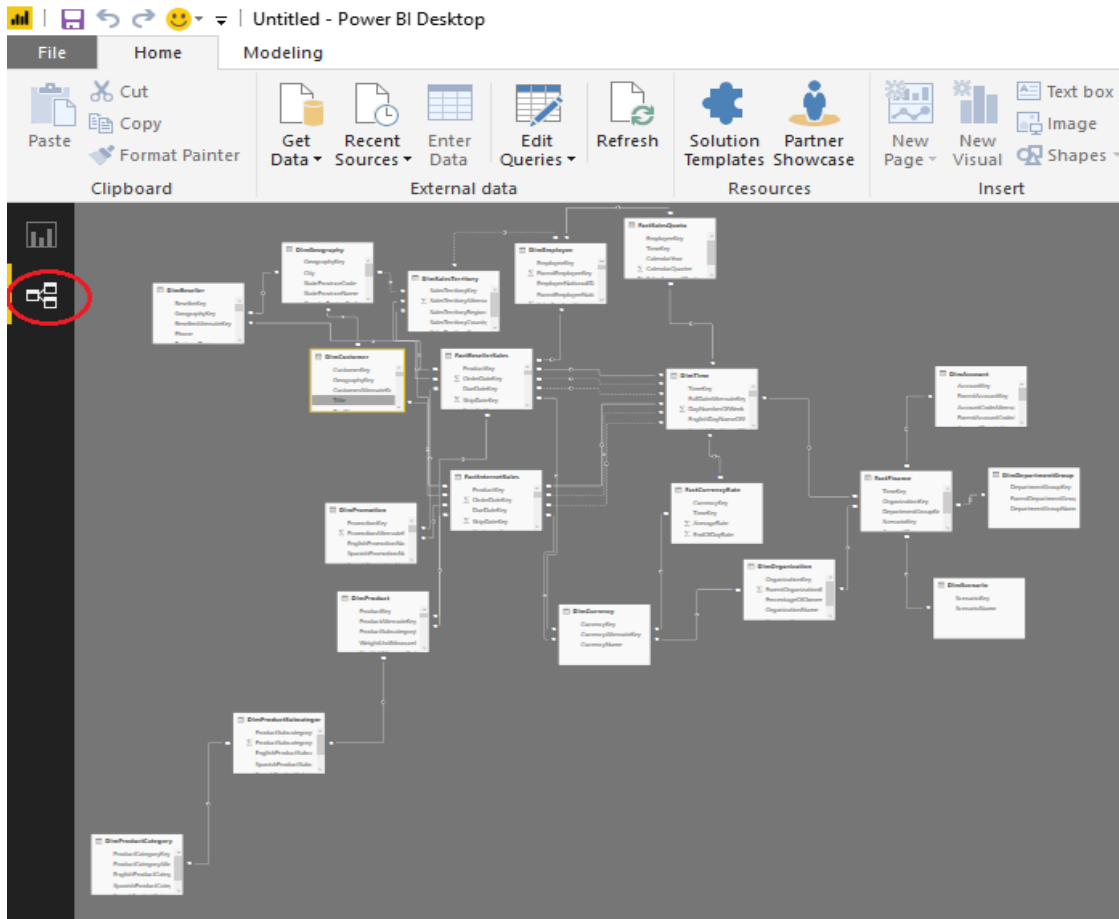
Step 9 – Click the arrow to the left of **AdventureWorksDW** to expand all data warehouse tables

Step 10 – Select the Dimension Tables and Fact tables that you will access to build your visualization

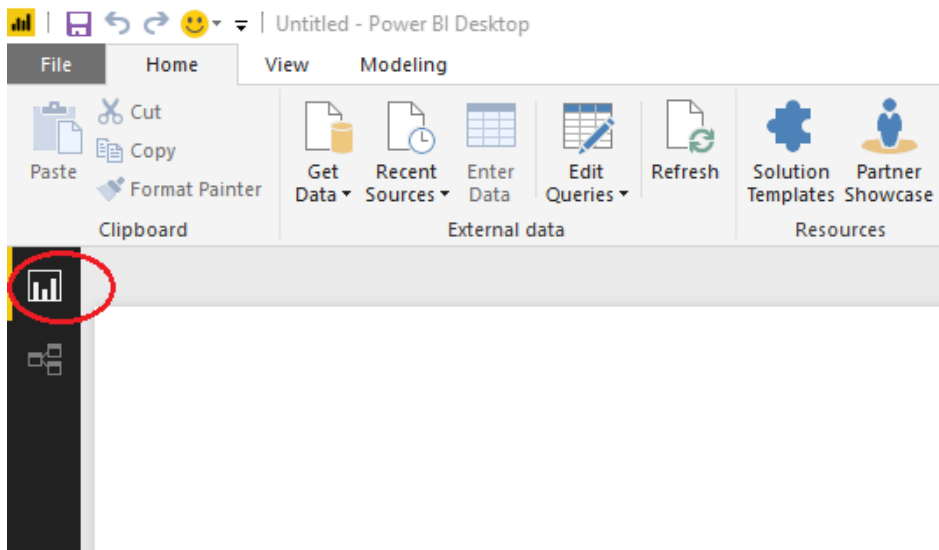
Step 11 – When all desired items have been selected, click **Load**



Step 12 – Click on the **Model** icon on the left side of the screen to see the AdventureWorks Data Warehouse schema. (Note: You may have less tables than the graphic shown below).



Step 13 – Click on the **Report** icon on the left side of the screen to return to the Report/Dashboard-building workspace. (Note: You can click on the **Data** icon to see the data records in each imported table).



Step 14 – Watch the video “Getting Started with the Power BI Desktop” to build a dashboard using the AdventureWorks Data Warehouse

Link to video . . .

[Getting Started with the Power BI Desktop](#)

Step 15 – As you create your dashboard, use **Save As** to save your Power BI file (.pbix) to your **U:\ drive**

**EPOCHLY IMPORTANT:** Save ALL of your work to your RMU Network drive (U:\ drive). Work saved on the virtual drives will **NOT** be retained after your virtual desktop session.